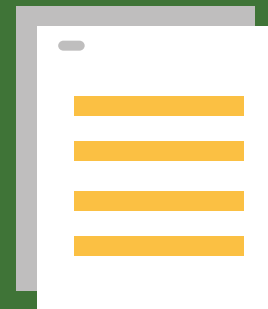


NATIONAL CORE INDICATORS

AGING AND DISABILITY SURVEY



You can help us!

The Wisconsin Department of Health Services (DHS) is surveying older adults and people with physical disabilities about their quality of life.

By participating in the Aging and Disability survey, you are helping us understand and improve the services people in Wisconsin are getting in long-term care.



QUESTIONS

We will ask about:

- ☐ Your health.
- ☐ Your safety.
- ☐ Your transportation.
- ☐ Your supports and services.
- ☐ People paid to help you.
- ☐ Where you live.
- ☐ The things you do in the community.



Answers are
confidential.



30-45 minutes
to complete.

Questions for DHS

If you have questions for DHS about this survey or the National Core Indicators project, please contact:

DHS

608-471-3901



Interviews
held between:

November 2023
and April 2024



WHAT TO EXPECT

1 Get a phone call

Knowledge Services, an independent organization contracted with DHS, will conduct the survey.

An interviewer will call you to schedule a survey at a time and date of your choice.

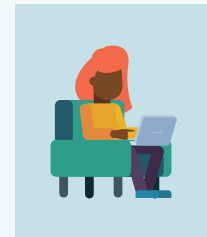
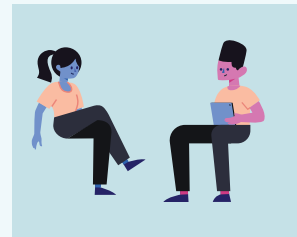
Tell the interviewer if you will need a remote accommodation.



2 Interview in person or remotely

During your meeting, share your opinions, feedback, and personal experiences about your services.

Your survey answers will not change the services you are getting now or may get in the future.



Guardians

Guardians and power of attorneys, please share this flyer with the person selected to take part in the survey.



Those getting this flyer in place of a guardian or power of attorney, please share this flyer with them.

You, your guardian, or your power of attorney may ask for your care staff to be there during the survey if you want to include them.

Questions for Knowledge Services

Please call Knowledge Services toll free at 866-228-5859:

- If your contact information has changed.
- If you need an interpreter.

www.dhs.wisconsin.gov/nci/index.htm
www.nationalcoreindicators.org



P-02235 | xx/2023